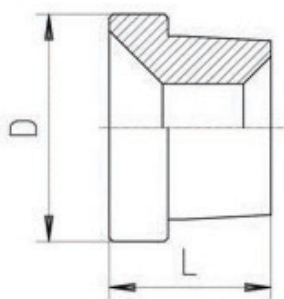


Mandrino frontale Gildemeister

Codice	Descrizione	d	D	L	Tondo max	Esagono max
PPGD20	AS16/20 GS/ GM20	20.0	26.0	60.0	20.0	-



Anelli guidabarra Gildemeister

Codice	Descrizione	d	D	L	Tondo max	Esagono max
T1101851	GM16	16.0	18.5	18.0	13.0	10.0
T1101850	GM16	18.5	0.0	12.0	16.0	14.0
T1102850	AS16/20 GS/ GM20	28.5	0.0	10.0	25.0	22.0
T1102851	AS16/20 GS/ GM20	25.0	28.5	25.0	20.0	17.0
T1103020	AS25	26.3	30.2	8	25	22
T1104381	AS25	33	43.8	27	25	22
T1104001	GM32	40.0	47.8	43.0	32.0	27.0
T1104201	GM35	42.0	47.8	43.0	35.0	30.0
T1104700	GM42	47.0	52.0	43.0	42.0	36.0
T1103590	AS32	32.7	35.9	9.0	32.0	27.0
T1104380	AS32	33.0	43.8	27.0	32.0	27.0
T1105190	AS48	49.7	51.9	16.0	48.0	42.0
T1105750	AS48	49.0	57.5	35.0	48.0	42.0