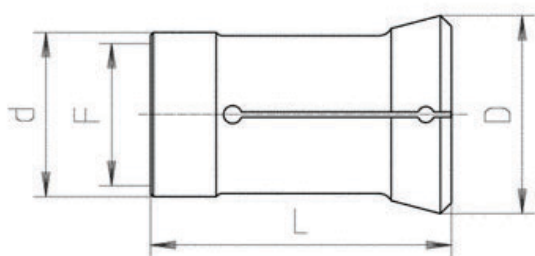


Spingibarra Schütte

Codice	Descrizione	d	D	L	F	Tondo max	Esagono max
9261E	SF13	17.0	19.6	77.0	M18X1	11.0	11.0
9255E	SE16/18- SG18-AG20	23.0	25.0	88.0	M23X1	16.0	17.0
9262E	SF20	25.0	27.0	88.0	M25X1	17.0	16.0
9282E	SD/SE25-AF/ SF26	33.0	35.0	118.0	M33X1.5	23.0	19.0
9319E	SD/SF/AF32	40.0	42.0	130.0	M38X1.5	28.0	17.0
9372E	AD40-SF42	48.0	51.0	158.0	M48X1.5	36.0	28.0
9406E	SD50/AF51	58.0	62.0	180.0	M58X1.5	51.0	44.0
9450E	SF63	72.0	77.0	210.0	M72X1.5 Sin.	63.0	55.0
9456E	SF67	78.0	78.0	196.0	M75X1.5 Sin.	67.0	50.0
9474E	SD80	90.0	92.8	238.0	M88X1.5 Sin.	80.0	70.0



Mandrino da ripresa Schütte

Codice	Descrizione	d	D	L	a	F	Tondo max	Esagono max
Q2202500	SG18-AG20	25.0	32.1	91.5	15°10'		19.0	16.0
C0002800	SE16/25	28.0	32.0	64.0	8°	M24X1.5 Sin.	24.0	20.0
C2202800	SF20/SF26	28.0	36.0	53.0	15°10'	M24X1.5 Sin.	22.0	19.0
C2203200	SE25-SF26	32.0	46.0	71.0	15°	M22X1.5 Sin.	26.0	23.0
Q0003550	SE25-SF26	35.5	40.0	80.0	8°10'	AtcBØ27x2.7 30°	32.0	27.0
C0003900	SD/SF/AF32	39.0	44.0	90.0	8°	M34X1 Sin.	35.0	28.0
Q0004700	AD40-SF42	47.0	52.5	73.0	8°	AtcBØ29x2.7 30°	42.0	36.0
A2205200	AD40-SF42	52.0	60.5	60.0	15° 10'		40.0	35.0
C0005600	AD40-SF42-SF51	56.0	60.0	95.0	8°	M51X1 Sin.	48.0	42.0
A2204400	S32PC-S36PC	44.0	54.0	76.0	15°	M51X1 Sin.	34.0	-